

## Trimble Digital Level DiNi data transfer guide (Tested on Windows 7 – 64bit)

### Download the Trimble Optical Positioning Components software

Go to the webpage "[http://www.trimble.com/survey/Digital-Levels\\_ts.aspx](http://www.trimble.com/survey/Digital-Levels_ts.aspx)"

Click Downloads link

Click Trimble DiNi link

Click Trimble Optical Positioning Components (SNP Com - 64/32bit)

Select SNP\_Service\_R4.7.16\_x32.zip for 32bit Windows or

Select SNP\_Service\_R4.7.16\_x64.zip for 64bit Windows.

Save and unzip the file into a folder

Select Setup to install SNP Com.

### Downloaded Trimble Data Transfer Utility (TDTU)

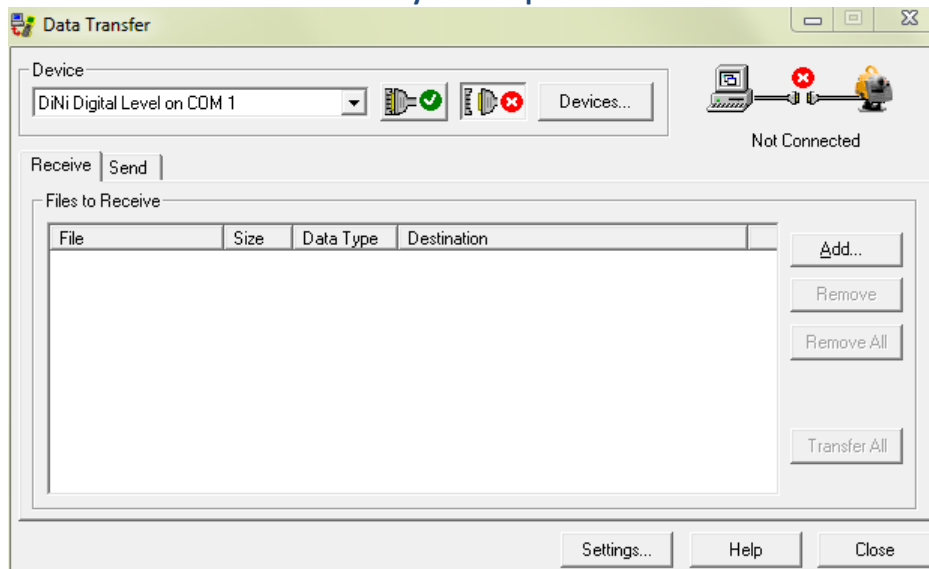
<http://www.trimble.com/datatransfer.shtml> or

UNSW staff network drive I:\ENG\SSIS\Everyone\IT4All\TrimbleDiNi

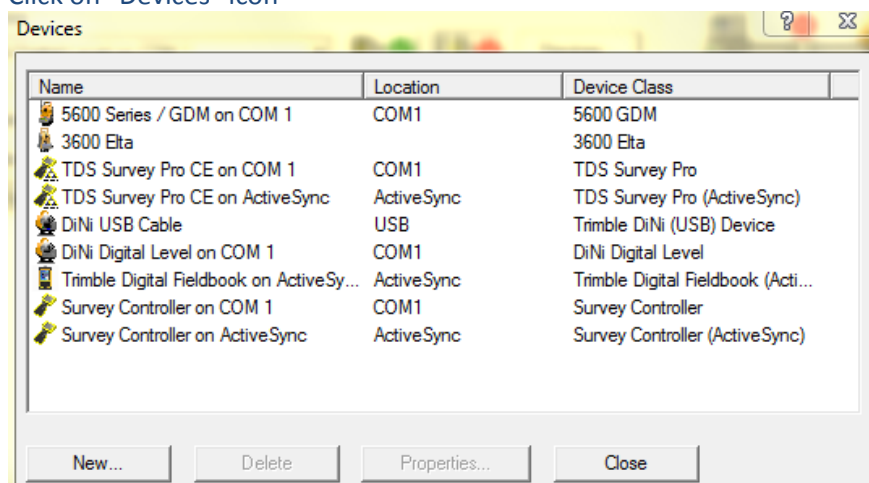
The file name is "Trimble DataTransfer156.exe".

Install TDTU.

### Start "Trimble Data Transfer" on your computer

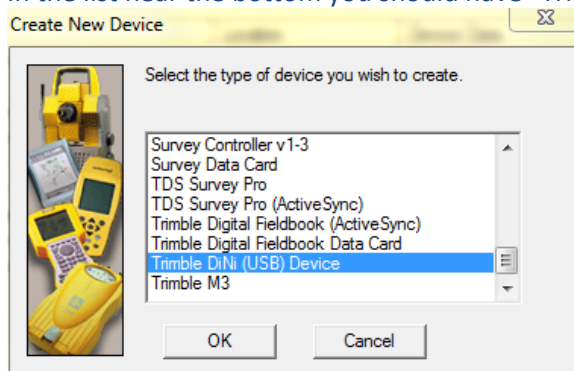


Click on "Devices" icon

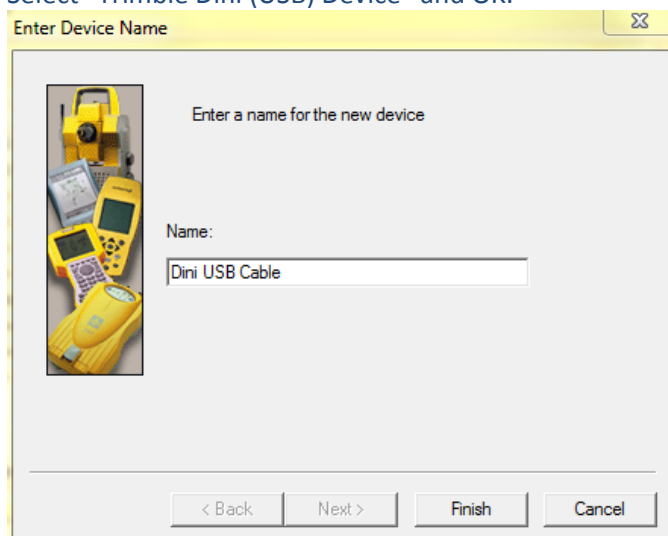


Click "New",

In the list near the bottom you should have "Trimble Dini (USB) Device"



Select "Trimble Dini (USB) Device" and OK.



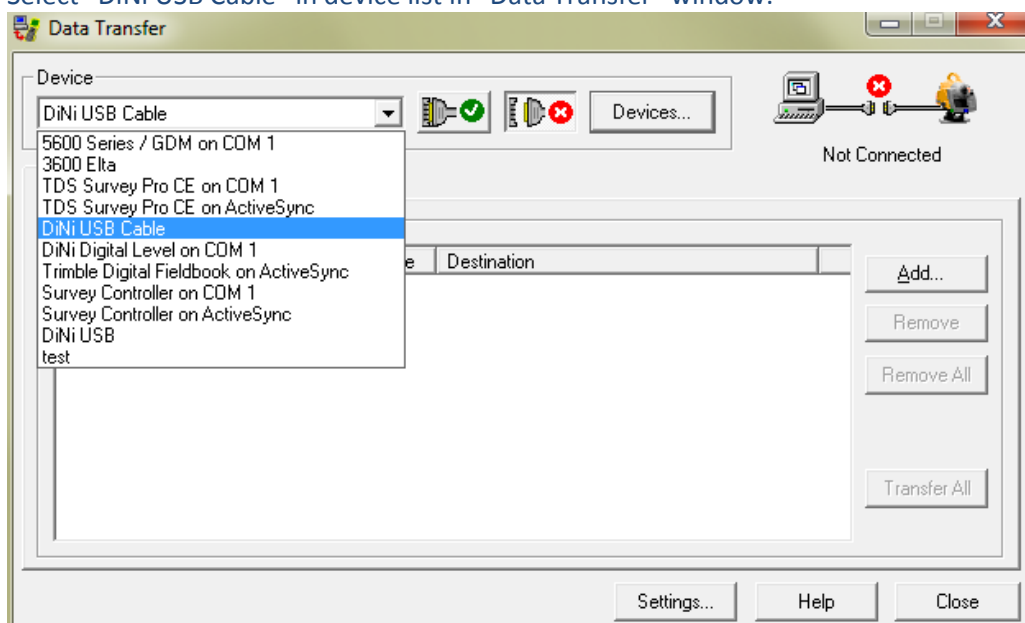
Type in a new name e.g. "DiNi USB Cable" and click Finish


The "DiNi USB Cable" name should appear in the Devices window.

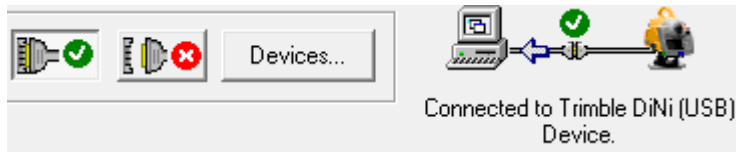
Close the Devices window

Connect DiNi to your PC and turn on.

Select "DiNi USB Cable" in device list in "Data Transfer" window.

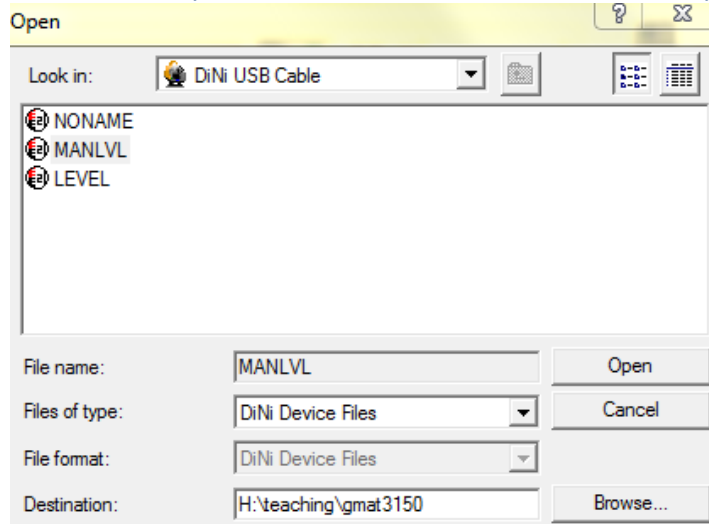


Click on  icon and it should show connection to DiNi USB on top right.



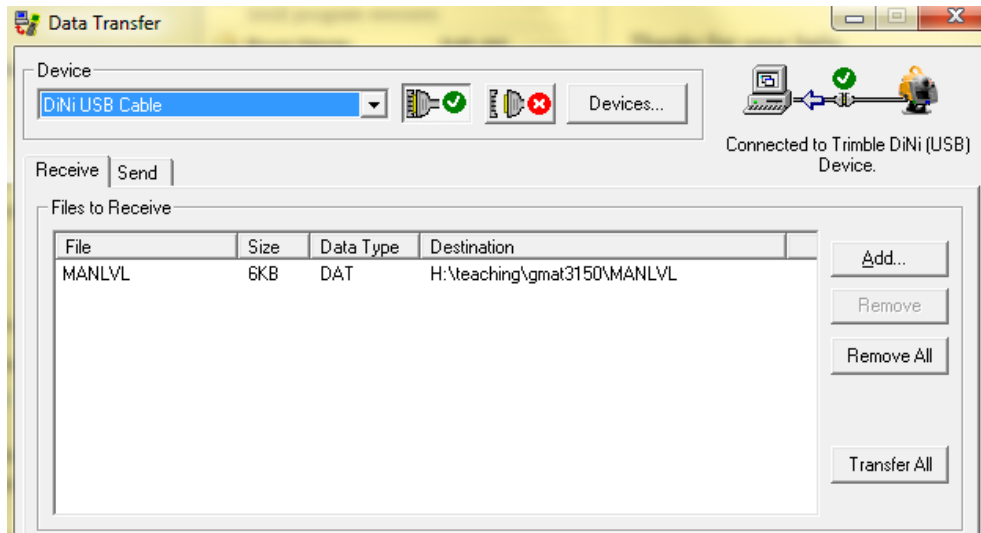
Click "Add".

Select the files you want to transfer and browse to where you want them transferred to.



Click on "Open".

You should then have files listed in the "Receive" tab.



Click on "Transfer All" and you should be done.

Now you are able find the downloaded file in the folder you chose.

The file's ext name is DAT. It is a text file and can be viewed in any text editor, e.g. NOTEPAD.