

HOW TO ACTIVATE YOUR DIGITAL LICENSE

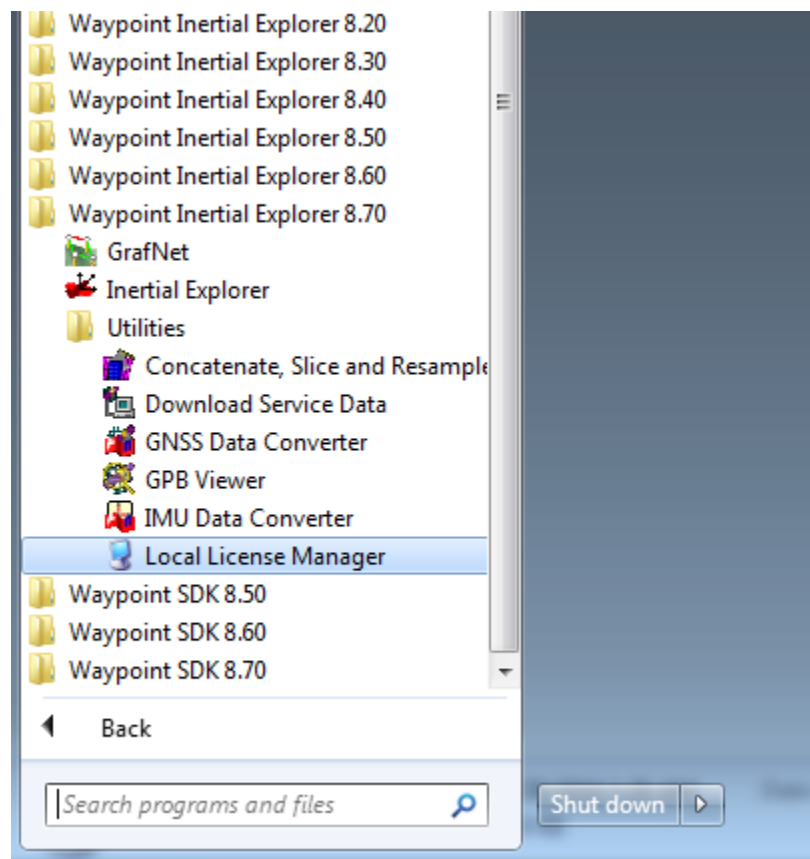
This tutorial applies to customers who wish to activate or return a new Waypoint digital license or upgrade an existing license. Please note that an Internet connection is required. If you do not have a direct internet connection, skip to Page 5.

1. Install Software

Install the Waypoint software that you intend to use. Please contact support@novatel.com with your activation ID if you need help locating the setup file.

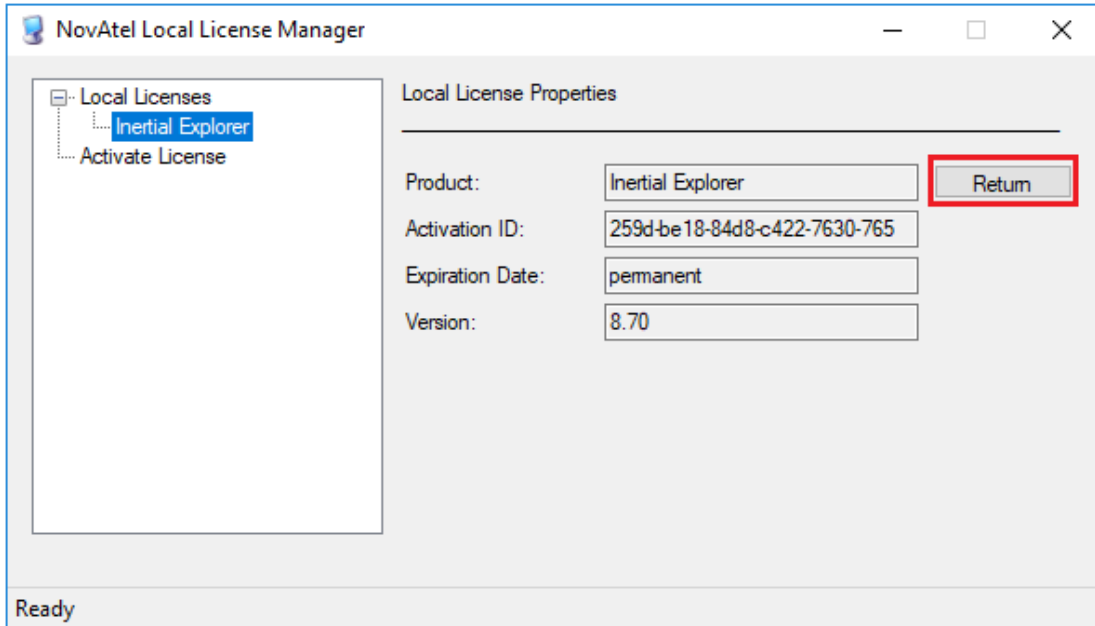
2. Open NovAtel Local License Manager

All versions of Waypoint software will create a program group accessible from the Start menu in Windows®. Access the “Local License Manager” from the “Utilities” folder as shown below. Alternatively, you can navigate to the software’s installation folder (i.e. C:\Novatel\InertialExplorer870\bin) and open *LLMForm.exe*.



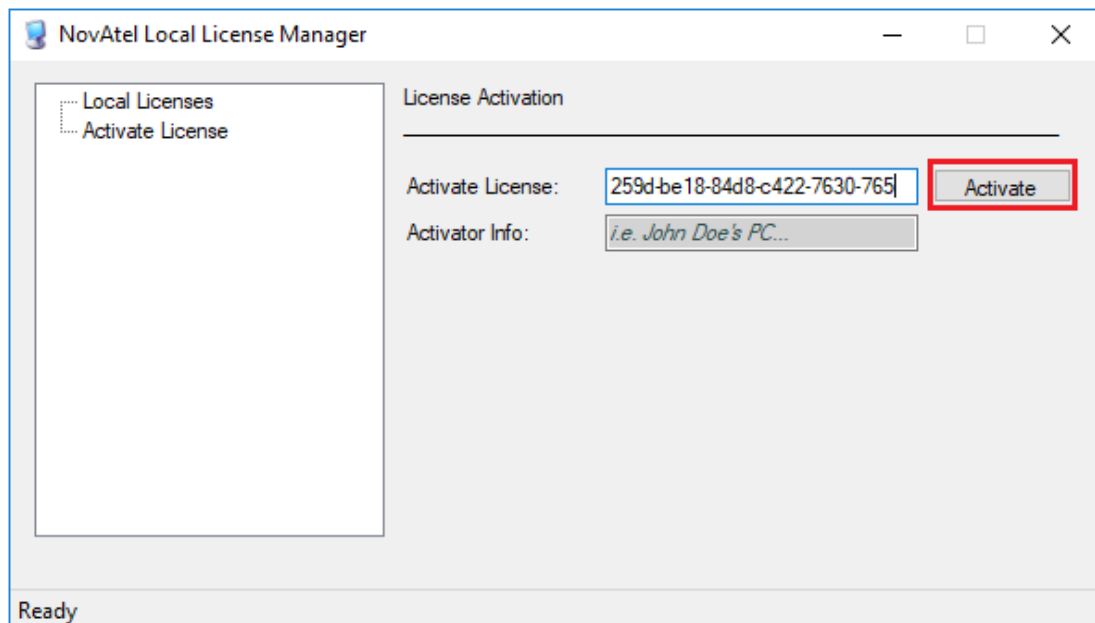
3. Return Existing License (if upgrading from a previous version)

If you are upgrading an existing license, **you will first need to return the original license**. Do this by selecting your existing license under “Local Licenses” and then select “Return”.



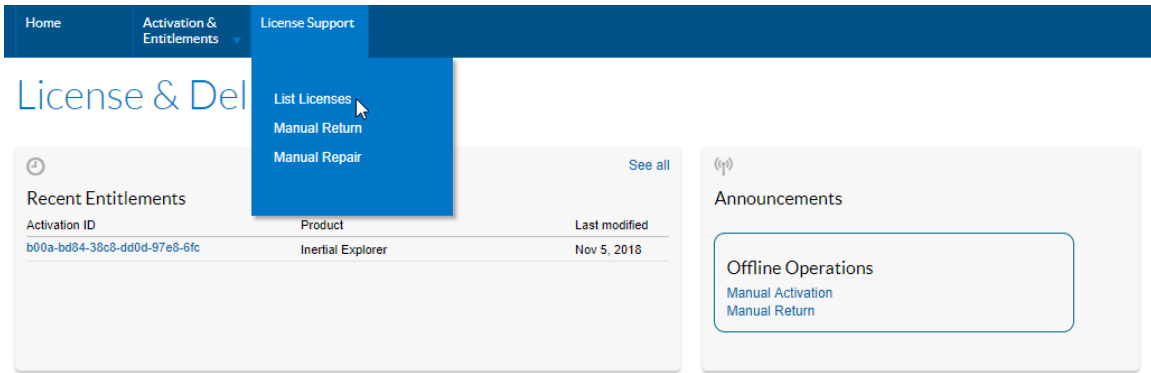
4. Activate License

Copy the activation ID that was provided to you by NovAtel and paste it into the box under the *Activate License* branch. Select “Activate”.

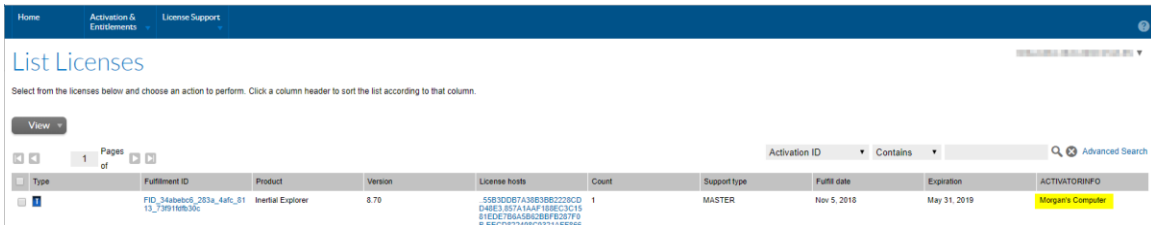


You may choose to optionally include a custom “Activator Info” string. For example, this string could be an email address, user name, or MAC/IP address of the computer the license is being activated on. This string is passed to the NovAtel license server and accessible through the FlexNet customer portal and by NovAtel Waypoint support agents. If nothing is entered in the text box, then no additional information is passed to the NovAtel license server. To access your Activator Info, use your activation ID to log on to the FlexNet customer portal here:

<https://license.novatel.com/flexnet/operationsportal/showActivationIdLogon.do>

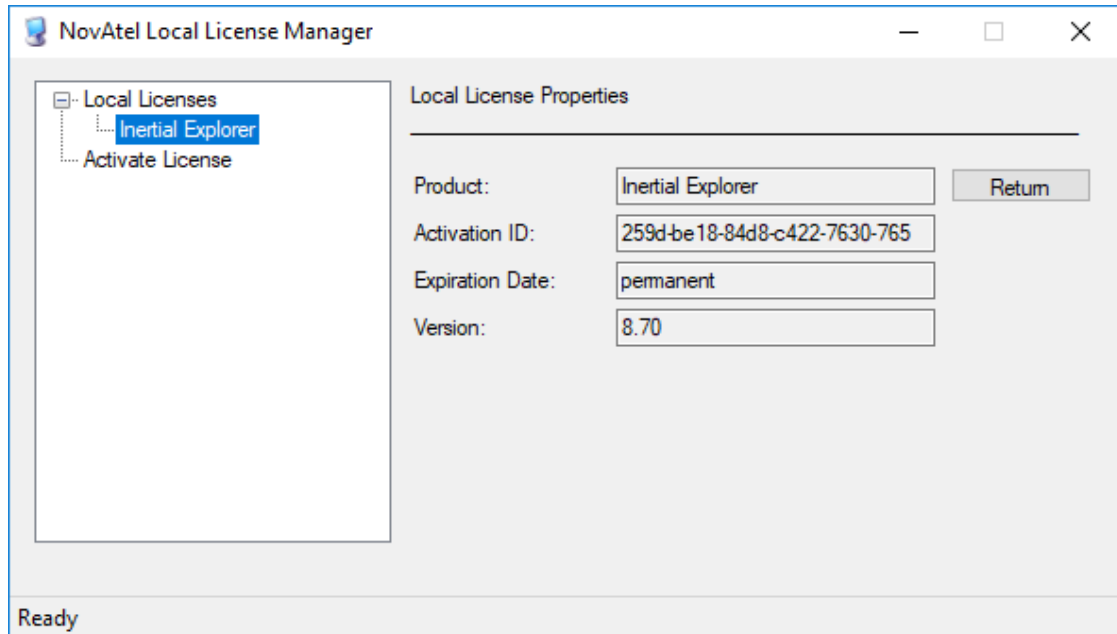


Under the License Support tab, select List Licenses. This page will display the date your license was last activated, and the string entered when activating.



5. Confirm Activation

When successfully activated, your license will appear under “Local Licenses”. You can view the license information by selecting it:



If the activation fails, please contact Customer Support (support@novatel.com) with your activation ID and a screen shot of the error.

HOW TO MANUALLY ACTIVATE AND RETURN A DIGITAL LICENSE

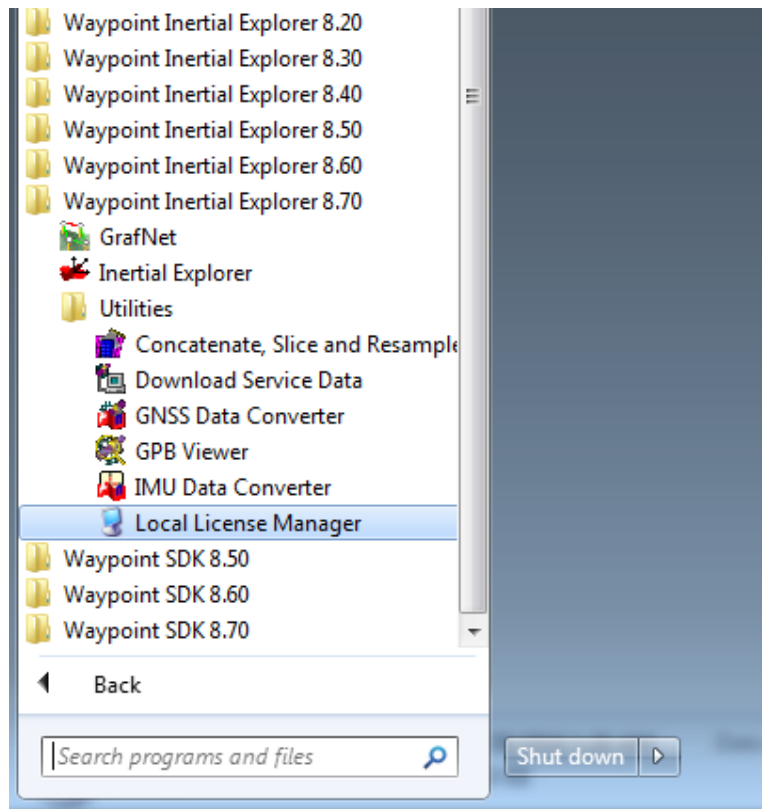
This tutorial applies to customers who wish to activate or return a new Waypoint digital license or upgrade an existing license, but who do not have a direct internet access. Internet access is still required on another computer to submit files to the licensing portal.

1. Install Software

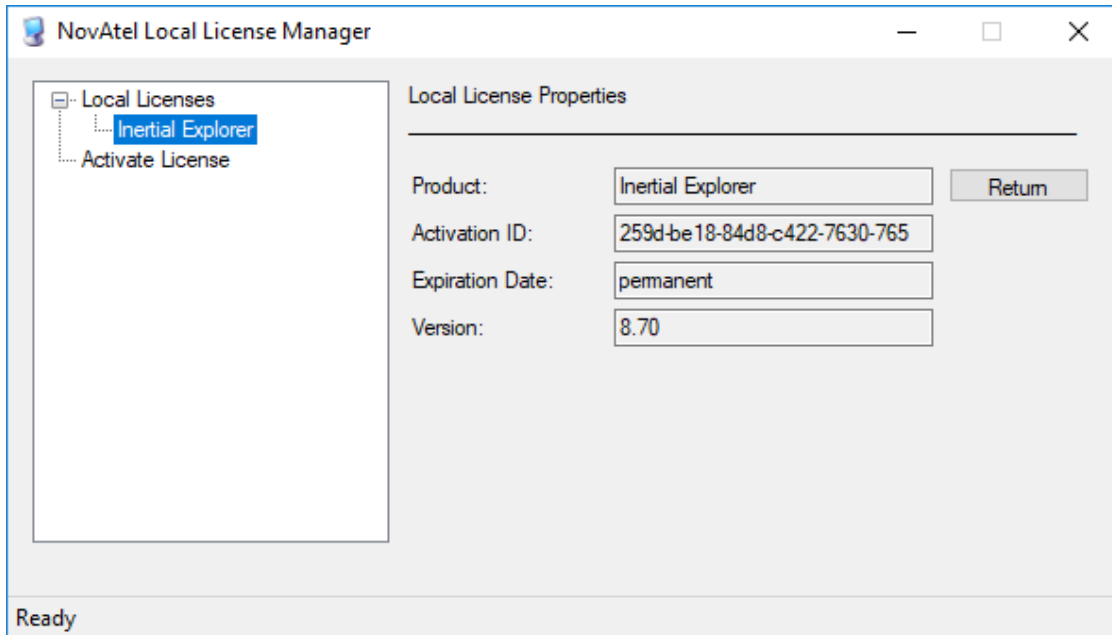
Install the Waypoint software that you intend to use. Please contact support@novatel.com with your activation ID if you need help locating the setup file. **If you are activating a new license (not an upgrade) skip directly to step 4, “Manually Activate a License” on page 9.**

2. Open NovAtel Local License Manager

Do this only to retrieve the activation ID for the license you will be returning. All versions of Waypoint software will create a program group accessible from the Start menu in Windows®. Access the “Local License Manager” from the “Utilities” folder as shown below. Alternatively, you can navigate to the software’s installation folder (i.e. C:\Novatel\InertialExplorer870\bin) and open *LLMForm.exe*.



Select your license under “Local licenses” in order to retrieve the license information, including the activation ID.



3. Manually Return Existing License (if upgrading from a previous version)

If upgrading an existing license, the original license must be manually returned before the upgrade code can be activated. Follow these steps:

- **Generate a Manual Return Request**

Open a console window and navigate to the software’s installation folder (i.e. C:\NovAtel\InertialExplorer870\bin). Then, enter the following command:

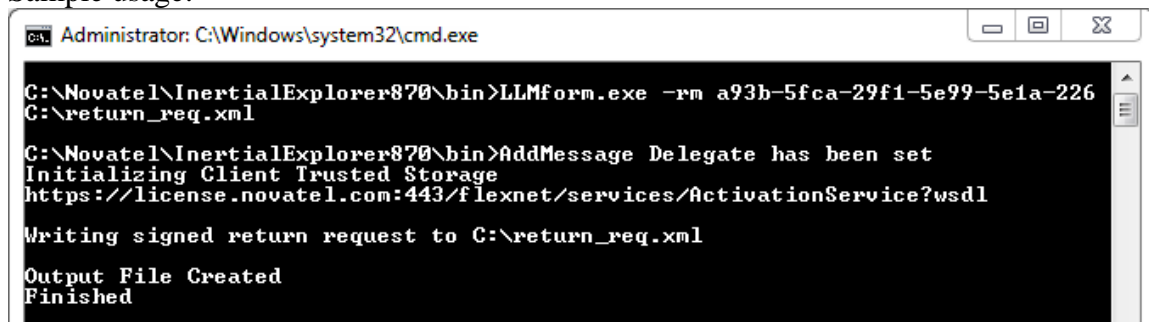
```
LLForm.exe -rm ActivationID OutputFile
```

Where:

ActivationID is the alpha-numeric code provided to you by NovAtel

OutputFile is the name (and path) of the output XML file that contains the request

Sample usage:



Move the return request file to a computer with internet access.

- **Process the return request through the FlexNet Customer Portal**

From a computer with internet access, sign in to the FlexNet customer portal using your activation ID here:

<https://license.novatel.com/flexnet/operationsportal/showActivationIdLogon.do>



Login

259d-be18-84d8-c422-7630-765

English (United States) ▼

Login

Once logged in, select “Manual Return” under “Offline Operations” from the start page:

The screenshot shows the FlexNet Customer Portal interface. At the top is a dark blue navigation bar with links for "Home", "Activation & Entitlements", and "License Support". Below this is the heading "License & Delivery Portal". The main content area is divided into two panels. The left panel, titled "Recent Entitlements", contains a table with columns for "Activation ID", "Product", and "Last modified". The right panel, titled "Announcements", contains a section for "Offline Operations" with links for "Manual Activation" and "Manual Return". A red arrow points to the "Manual Return" link.

Activation ID	Product	Last modified
4044-9c39-a058-66ab-e132-206	Inertial Explorer	Dec 5, 2016

Select “Browse...” to browse to the previously generated return request XML file that was moved from the computer with the Waypoint software installed (i.e. c:\return_req.xml) and then “Submit”:

Manual Return

Generate the trusted storage return request as an XML file on the client machine. Load that file here.

Request XML File

Request XML File: * C:\return_req.xml ?

Select “Save to File” to download the processed response (responseXML.xml) and move it to the computer with Waypoint software installed.

Manual Return Summary

Generate the trusted storage return request as an XML file on the client machine. Load that file here.

Generated license: 4044-9c39-a058-66ab-e132-206

Product(s): Inertial Explorer

Fulfillment ID(s): FID_b7c1223a_5c73_460d_9e7e
e579

Sold to: NovAtel Internal Licenses

```
<?xml version="1.0" encoding="UTF-8" ?  
><Response  
xmlns="http://www.macrovision.com/fnp/20  
04/11/activation"><ResponseHeader><Ver  
sionNumber>2</VersionNumber><Respon  
seType>RETURN</ResponseType><Requ
```



- **Process the Response**

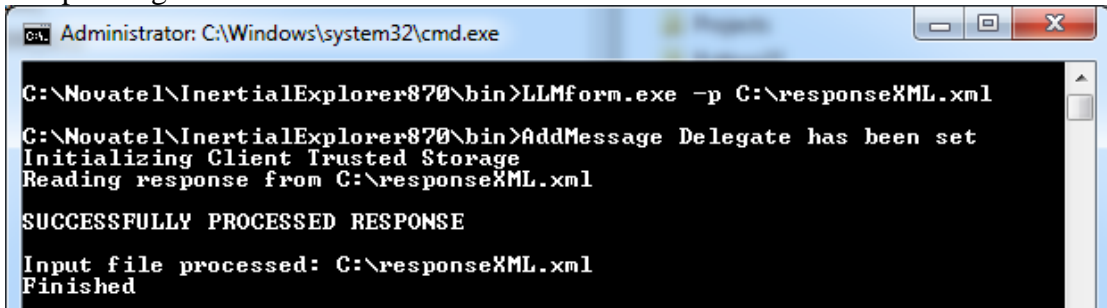
From the computer with Waypoint software installed, process the response generated from the customer portal through LLMForm.exe as follows:

LLMForm.exe -p *InputFile*

Where:

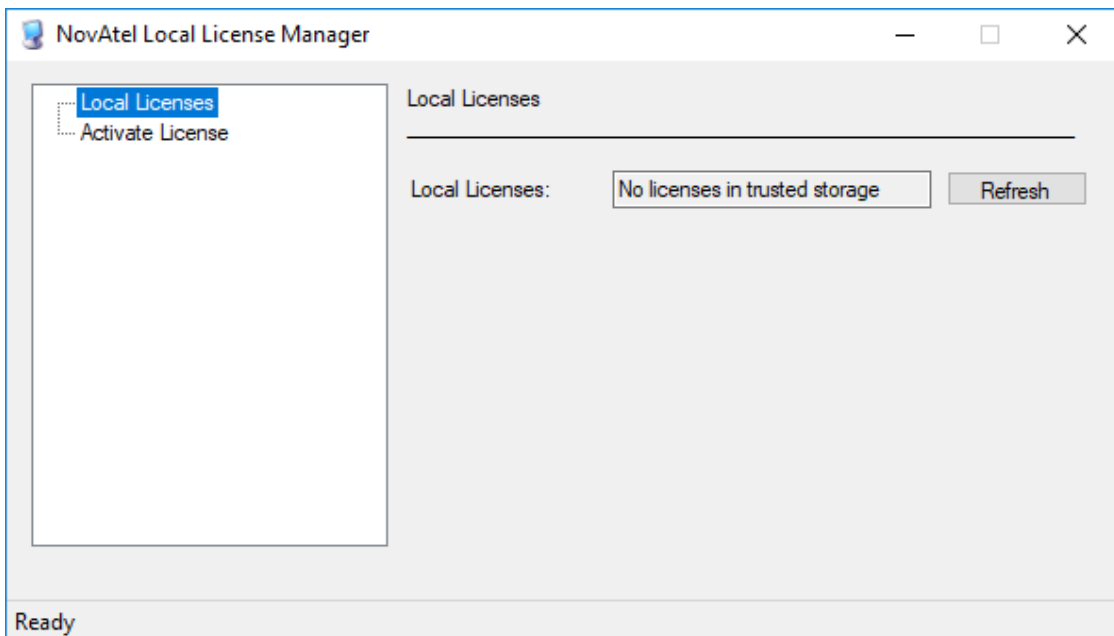
InputFile is the responseXML.xml file generated from the customer portal

Sample usage:



```
Administrator: C:\Windows\system32\cmd.exe
C:\Novatel\InertialExplorer870\bin>LLMform.exe -p C:\responseXML.xml
C:\Novatel\InertialExplorer870\bin>AddMessage Delegate has been set
Initializing Client Trusted Storage
Reading response from C:\responseXML.xml
SUCCESSFULLY PROCESSED RESPONSE
Input file processed: C:\responseXML.xml
Finished
```

The license should now be returned. To verify, open the *Local License Manager* and look under the *Local Licenses* branch to ensure that the license is no longer listed:



4. Manually Activate a License

- **Generate a Manual Activation Request**

Open a console window and navigate to the software's installation folder (i.e. C:\NovAtel\InertialExplorer870\bin). Then, enter the following command:

```
LLMForm.exe -am ActivationID ActivatorInfo OutputFile
```

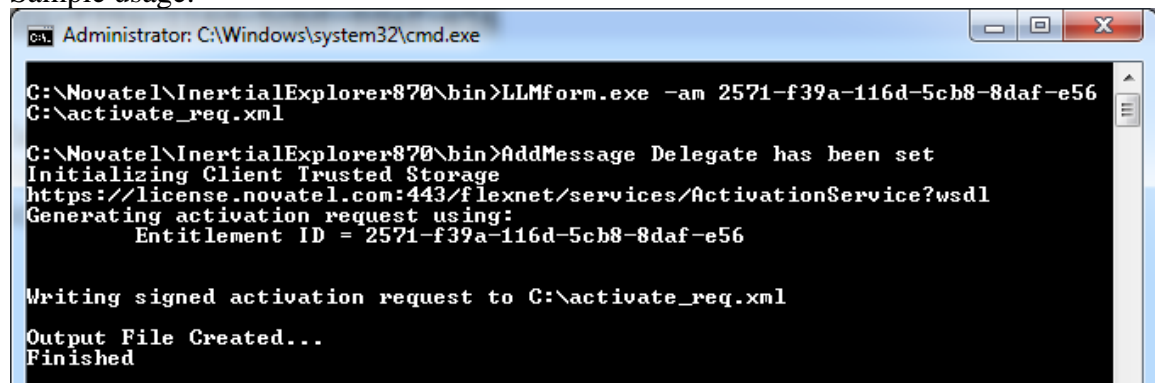
Where:

ActivationID is the alpha-numeric code provided to you by NovAtel

ActivatorInfo is an optional string you may choose to enter to help identify the computer the license has been activated on (see note below)

OutputFile is the name (and path) of the output XML file that contains the request

Sample usage:



```
Administrator: C:\Windows\system32\cmd.exe
C:\Novate1\InertialExplorer870\bin>LLMform.exe -am 2571-f39a-116d-5cb8-8daf-e56
C:\activate_req.xml
C:\Novate1\InertialExplorer870\bin>AddMessage Delegate has been set
Initializing Client Trusted Storage
https://license.novatel.com:443/flexnet/services/ActivationService?wsdl
Generating activation request using:
    Entitlement ID = 2571-f39a-116d-5cb8-8daf-e56

Writing signed activation request to C:\activate_req.xml

Output File Created...
Finished
```

Move the manual activation request file to a computer with internet access.

Note: You may choose to optionally include a custom “Activator Info” string. For example, this string could be an email address, user name, or MAC/IP address of the computer the license is being activated on. This string is passed to the NovAtel license server and accessible by NovAtel Waypoint support agents. If nothing is entered, then no additional information is passed to the NovAtel license server. Contact support@novatel.com in the event you are unsure where a license was last activated.

- **Process the request through the customer portal**

From a computer with internet access, login to the customer portal here with your activation ID here:

<https://license.novatel.com/flexnet/operationsportal/showActivationIdLogon.do>



Login

259d-be18-84d8-c422-7630-765

English (United States) ▼

Login

Select “Manual Activation” under “Offline Operations” from the Start Page:

Home Activation & Entitlements License Support

License & Delivery Portal

Activation ID	Product	Last modified
4044-9c39-a058-66ab-e132-206	Inertial Explorer	Dec 5, 2016

Recent Entitlements [See all](#)

Announcements

- Offline Operations
 - Manual Activation
 - Manual Return

Select “Browse...” to browse to your activation request and select “Submit”.

Offline Trusted Activation

Generate the trusted storage activation request as an XML file on the client machine. Load that file here.

Request XML File *

Save the response to file:

Offline Trusted Activation Summary

Generate the trusted storage activation request as an XML file on the client machine. Load that file here.

Offline Trusted Activation Details

Generated license: 4044-9c39-a058-66ab-e132-206

Product(s): Inertial Explorer

Fulfillment ID(s): FID_881af1cb_e9d7_4687_b8af
8864

Sold to: NovAtel Internal Licenses

Generated file:

```
<?xml version="1.0" encoding="UTF-8" ?
><Response
xmlns="http://www.macrovision.com/fnp/20
04/11/activation"><ResponseHeader><Ver
sionNumber>2</VersionNumber><Respon
seType>ACTIVATION</ResponseType><R
```



Move the generated responseXML.xml file to the computer with Waypoint software installed.

- **Process the response through LLMForm.exe**

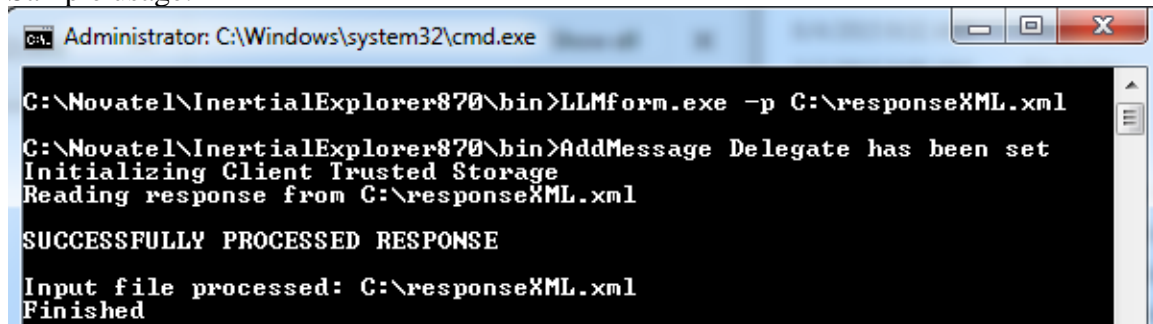
From the computer with Waypoint software installed, process the response generated from the customer portal by opening a console window in the software's installation directory (i.e. C:\NovAtel\InertialExplorer870\bin") and enter the following command

`LLMform.exe -p InputFile`

Where:

InputFile is the response file generated by the customer portal

Sample usage:



If this is the first manual activation being performed on a specific computer, the license will not be activated on the machine at this point, as the first response is a configuration response. You will need to repeat the manual activation procedure (i.e. generate a new request, process the request through the customer portal and process the response through LLMForm.exe) to complete the manual activation procedure. Future activations on the same computer will only require processing of one response.

The license should now be activated. To verify, open the local license manager and check for your license under "Local Licenses":

